

# Contra Costa County IHSS Public Authority

## Advisory Committee Meeting

~May 21, 2019 1:00 to 3:00 pm~

### 1<sup>st</sup>. First Floor Classroom

*Located on left side of building thru Main Lobby*

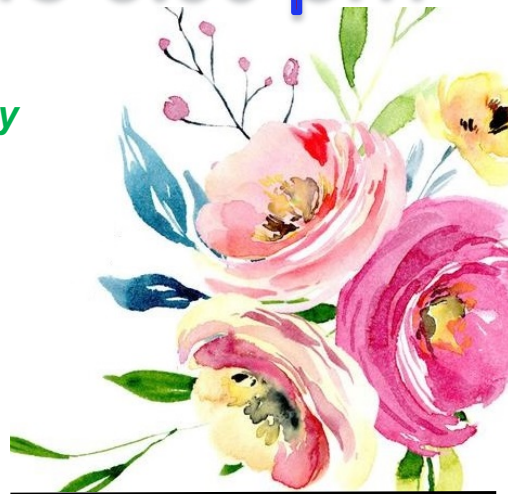
500 Ellinwood Way - Pleasant Hill, CA 94523

### CONFERENCE CALL NUMBER FOR MEETINGS

**(925) 957-7730 AFTER DIAL TONE PRESS**

**CODE PROMPTLY 03064630**

**PLEASE CONTACT BEATRIZ IF YOU ARE UNABLE TO MAKE THIS MEETING WITHIN 24 HOURS OF MEETING OR IF YOU ARE RUNNING LATE DUE TO QUORUM NEEDS – THANK YOU!**



## Agenda

- I. Roll Call & Introductions
- II. Public Comment Period (3 minutes per speaker)
- III. Individual Member Reports & Announcements
- IV. Approval of April 16, 2019 Meeting Summary – **Action Item\***
- V. Presentation from Elaine Welch CEO of Mobility Matters
- VI. Reports
  - A. Fraud/Quality Assurance/IHSS Program Report
  - B. Staff Report
  - C. Chair Report
  - D. Advisory Committee Expenditure Report
  - E. Health, Safety & Education Sub-Committee Report
- ~BREAK~**
  - F. Rapid Response Sub-Committee Report
  - G. Nominating Sub-Committee Report
  - H. Advocacy Sub-Committee Report
  - I. California IHSS Consumer Alliance (CICA) Report
  - J. Independent Living Resource Report
  - K. SEIU 2015 report
- VII. Unfinished Business
  - A. None
- VIII. New Business
  - A. None
- IX. Other – agenda items for next meeting on **June 18, 2019**
- X. Meeting Adjourned

The Contra Costa County IHSS Public Authority Advisory Committee and its committees will provide reasonable accommodations for persons with disabilities planning to participate in the above noticed meeting if they call **Beatriz Salgado** at least 48 hours before the meeting at **(925) 363-6670**

**Any disclosable public records related to an open session item on a regular meeting agenda and distributed by the IHSS Public Authority Advisory Committee less than 96 hours prior to that meeting are available for public inspection at 500 Ellinwood Way, Ste. 110, Pleasant Hill during normal business hours.**